



EAGLE[®]

Traffic Control Systems

mobotrex[®]



SIGNAL CATALOG

109 W 55TH STREET | DAVENPORT, IA 52806 | 563-323-0009

Introduction



Experts in Traffic Solutions

MoboTrex's expertise results in the best traffic solutions for every customer, every day.

From traffic signals to pedestrian signals and traffic control cabinets to intersection control software, MoboTrex keeps a mobile population moving forward with innovative products and expert solutions, one intersection at a time.

MoboTrex is headquartered in Davenport, Iowa, with additional locations in Pflugerville, Texas; Powhatan, Virginia; and Volo, Illinois.

With extensive experience solving traffic problems across North America, our traffic control experts have the vision and engineering know-how to transform trouble spots into safe and efficient intersections.



DAVENPORT OFFICE

109 W. 55th Street
Davenport, IA 52806

P: 563.323.0009

F: 563.323.8256

PFLUGERVILLE OFFICE

15825 Impact Way
Pflugerville, TX 78660

P: 512.521.3060

F: 563.323.8256

POWHATAN OFFICE

1550 Standing Ridge Drive
Powhatan, VA 23139

P: 804.794.1592

VOLO OFFICE

31632 N. Ellis Drive
#305
Volo, IL 60073

P: 847.546.1616

F: 847.546.8314



563.323.0009 | www.MoboTrex.com

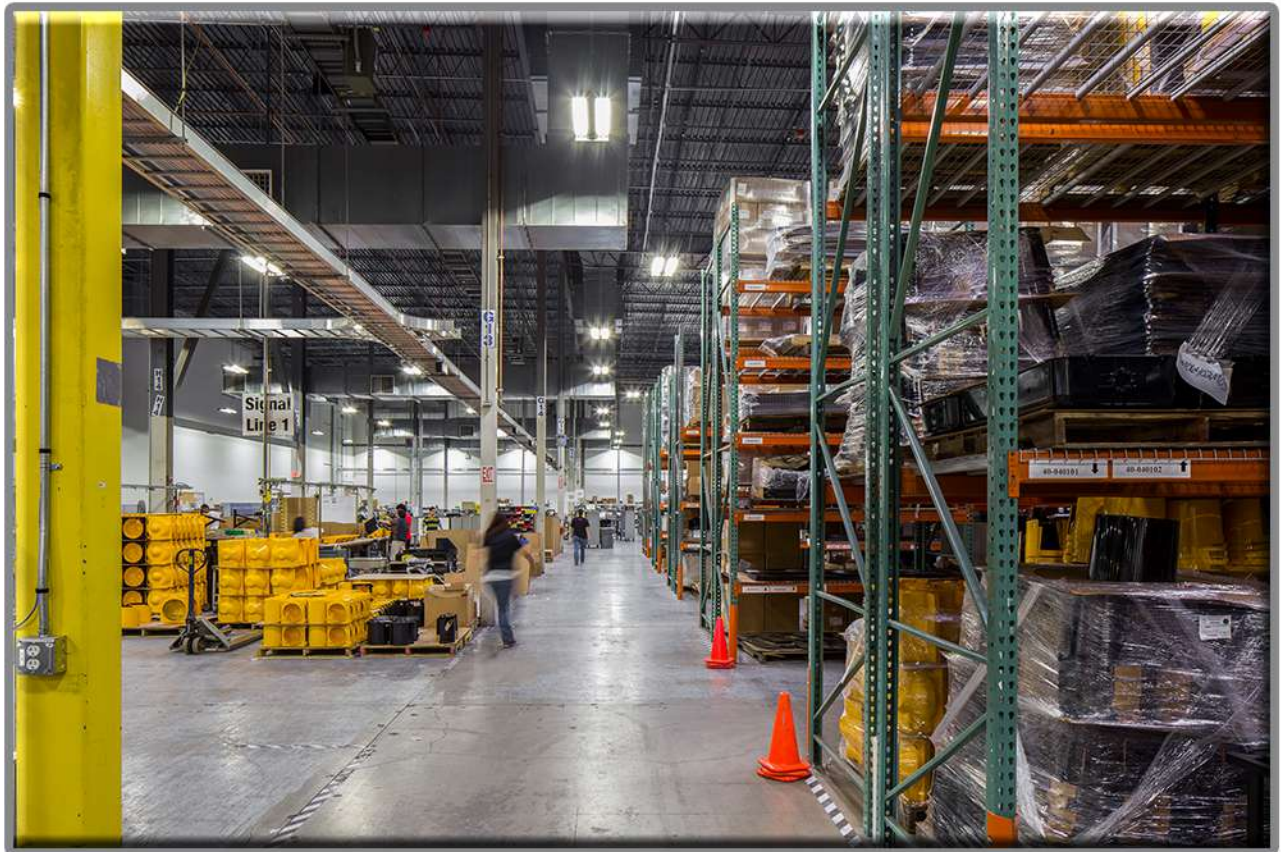
Assembled in the USA

Eagle Traffic Control Systems products can be found in major metropolitan areas and rural communities throughout the country. All Eagle Signals are proudly assembled here in the United States at our 100,000 square foot manufacturing facility in Pflugerville, TX.

Founded in 1969, MoboTrex has a long history of designing innovative and quality American-made traffic products with over 1,000 years of combined experience within the Pflugerville manufacturing facility alone.

MoboTrex is the largest manufacturer of traffic signals in the United States producing on average over 65,000 individual signals per year.

With over 160 employees across four locations, we are here to help you get what you need for any project in any state.



Signal Options >

The Eagle Traffic Control Systems Signal Catalog from MoboTrex will give you a high-level overview of the many signal products we offer and some of the key differentiators of each item. Our products are very customizable and below you will find a few of the different options you can request when ordering a historic Eagle Signal.

- **Multiple paint colors available**
- **Signals can be built empty or with LEDs installed**
- **Reinforcing and support plates for poly signal connection**
- **Quick-connect terminals on terminal blocks**
- **Heated visors installed in signal heads**
- **Louvered inserts installed to control signal visibility**



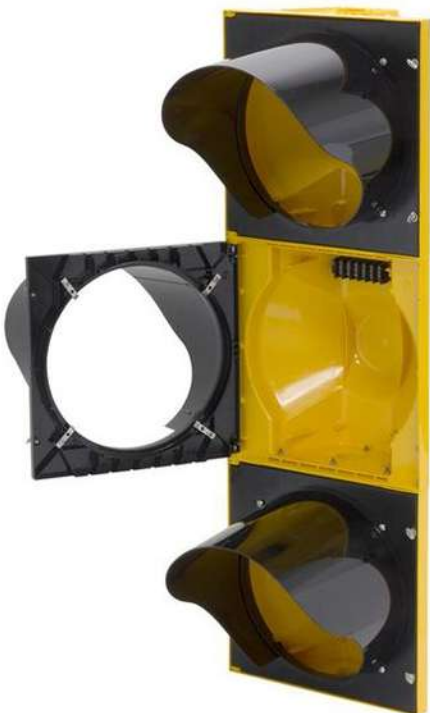
SA Polycarbonate Signals



SA Polycarbonate Signals continue the history of the Eagle Signal product line. The SA series polycarbonate signals are injection molded of ultraviolet-stabilized, pre-colored opaque polycarbonate that is free from peeling and corrosion. SA signals are built to meet or exceed ITE specifications for traffic signals. The signals are available in numerous configurations and colors, from single sections up to 5-sections. The SA Polycarbonate Signals are designed to be virtually maintenance free.

Key Differentiators

- Internal hinges and thumb screws for door closure
- .093" wall thickness
- 8" or 12" versions available
- Vehicle (round door) and Pedestrian (square door) versions available



SG Polycarbonate Signals >

SG Polycarbonate Signals are the successor to the LFE and Automatic Signal product lines. The SG series is our heavy duty signal line, with an increased wall thickness for maximum strength while the polycarbonate material minimizes the signal weight. The SG series polycarbonate signals are injection molded of ultraviolet-stabilized, pre-colored opaque polycarbonate that is free from peeling and corrosion. SG signals are built to meet or exceed ITE specifications for traffic signals. The signals are available in numerous configurations and colors, from single sections up to 5-sections. SG Polycarbonate Signals are designed to be virtually maintenance free.

Key Differentiators

- External hinges, wing nuts, and eye bolts for door closure
- .125" wall thickness
- 8" or 12" versions available
- Vehicle Signals only



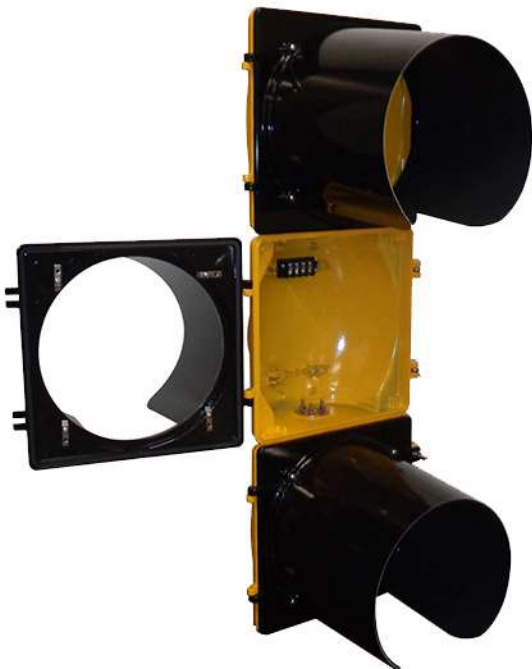
SG Aluminum Signals >

SG Aluminum Signals are the successor to the LFE and Automatic Signal product lines. The SG heavy-duty signal series is the strongest signal available, with the aluminum housings holding up in all weather conditions. SG Aluminum Signals are die-cast from grade 5052-H32 aluminum. SG signals are built to meet or exceed ITE specifications for traffic signals. The signals are available in numerous configurations and colors, from single sections up to 5-sections.



Key Differentiators

- External hinges, wing nuts, and eye bolts for door closure
- .125" wall thickness
- 8" or 12" versions available
- Vehicle (round door) and Pedestrian (square door) versions available



12" Pedestrian Signals >

The 12" Pedestrian Signals continue the history of the Eagle Signal product line. The SA series polycarbonate pedestrian signals are injection molded of ultraviolet-stabilized, pre-colored opaque polycarbonate. SA signals are built to meet or exceed ITE specifications for traffic signals. The 12" Pedestrian Signals are available in numerous configurations and colors, as well as in one or two-section configurations.

Key Differentiators

- Internal hinges and thumb screws for door closure
- .093" wall thickness



16" Pedestrian Signals >

The 16" Pedestrian Signal is the ideal choice to improve pedestrian safety. The 16" Pedestrian Signal is available in two versions. The polycarbonate version is injection molded of ultraviolet-stabilized, pre-colored opaque polycarbonate that is free from peeling and corrosion. The aluminum version is die-cast from grade 5052-H32 aluminum and powder-coated in a variety of available colors.



Key Differentiators

- Heavy duty .25" thick material in both aluminum and poly version
- Available with reversible clamshell mounting or standard bracket mounting using serrations on top and bottom access holes
- Designed for 16" pedestrian LEDs
- External hinge pins, wing nuts, and eye bolts for door closure



Signal Backplate >

Traffic signal backplates are designed to properly shield a traffic signal from background obstructions. The backplate provides a dark silhouette that isolates the signal face from store lights, signs, sunlight and other environmental conditions that tend to reduce the brilliance of the light indications. A study found that back-plating can cut the number of vehicle accident claims at intersections by nearly 15%.

Key Differentiators

- Cored holes and stainless steel thread forming screws for quick, easy installation of backplates.
- Aluminum backplates are fabricated from .063" thick 5052-H32 aluminum
- Polyethylene backplates are fabricated from .125" thick high density polyethylene (HDPE)
- Available with 1", 2", and 3" wide reflective tape installed in center or flush with outside edge
- For polyethylene backplates, if reflective tape is required, the backplates will be fabricated from ABS material



Vacuum Formed Signal Backplate



Vacuum Formed backplates include a formed flange around the edges of the backplate to add strength and rigidity over and above a typical flat poly backplate. This allows the backplate to keep its strength and shape in extreme temperatures, continuous direct sunlight, and severe weather conditions.



Key Differentiators

- Vacuum forming process adds a .775" thick flange around the edges of the backplate, with a total flange depth of .90"
- Backplates available for both SA and SG series signal heads in 1, 3, 4, and 5-section in-line and 5-section cluster heads
- Reflective tape versions available to further increase the visibility of the signal
- Split versions available to simplify retrofits to existing signal heads
- Backplates include hardware to attach the backplate to the signal head

Eagle Traffic Signal Visor

Eagle Traffic Signal Visors help improve the signal visibility in sunlight, while allowing the signal to be viewed from multiple angles. MoboTrex offers signal visors for 8" and 12" vehicle signals, as well as 12" and 16" pedestrian signals. The visors can be manufactured from aluminum or polycarbonate, and come in a range of colors to meet your agency's requirements.

Key Differentiators

- **Twist-tabs for simple installation on any Eagle signal**
- **Attached with stainless steel hardware for corrosion resistance**
- **Tunnel, full, circle, and cap visors available for vehicle signals**
- **Tunnel visors available for 12" pedestrian signals**
- **Tunnel and egg crate visors available for 16" pedestrian signals**
- **Standard visors available in Green, Yellow, and Black. Custom colors available by request.**



Eagle Defender *Heated Signal Visor*



The Eagle Defender utilizes an ultra-efficient, positive temperature coefficient (PTC) heating element to keep the visor warm in snow conditions. The PTC technology is extremely durable, reliable, and heats up quickly, eliminating the chance for snow to build up on the LED. Using this modern PTC heating technology means the heater will keep a constant temperature on every point of the heater, and the heater will never rise above a safe temperature because it is self-limiting.



Key Differentiators

- Flexible heater installed on inside of visor
- Control Module installed in signal, can control up to five (5) heaters
- Temperature and humidity probe installed in signal to determine if conditions for snow are present
- Power is typically supplied using an extra, unused wire from the signal cable
- Available on new signals or as a retrofit kit

Control Module

- Module designed to fit on existing terminal block mounting holes
- Each visor connects independently to the control module. Five visors can hook into a single module and are controlled independently.
- Module has a single connection to 120V



Control Module

Temperature/Humidity Probe

- Probe mounted somewhere on the outside of the signal
- Module settings to operate the heaters during typical snowing conditions – below 35.6° F and above 75% RH



Temperature/Humidity Probe

Eagle Span Wire Hardware

Eagle Span Wire Hardware is a heavy duty solution designed for span wire mounting applications. The iron construction is designed to hold up in extreme weather conditions and will fit all Eagle signal heads.



Key Differentiators

- Heavy Duty Cast Iron construction
- Stainless Steel hardware
- Adjustable U-bolts for securing wire clamp to span wire
- Balance adjuster for additional adjustment features 1-1/2" thread size
- Wire Entrance available with male or female fitting for connection to signal head
- Powder coating – gloss or flat black, yellow, green, or custom colors
- Multiple options available for 1, 2, 3, or 4-way signal mounting

Clamshell Mount >

The Clamshell Mount is a quick and convenient way to mount a 16" pedestrian maintenance housing. With one half installed on the pole and the other half installed on the housing, the dual mount pieces easily slide together creating a single, secure mount that allows easy maintenance access and quick removal and remounting in the field.



Key Differentiators

- **Cast aluminum alloy**
- **Quick and easy to install**
- **Multiple mounting and color options to meet various requirements**
- **Tamper resistant**
- **Design allows for mounting to left or right side of maintenance head**
- **Neoprene gasket used around access door and wire entrance hole on back side of mount to ensure weather tight seal**
- **Three position double row terminal block allows field wires to terminate in Clamshell**
- **24" wire leads provided to connect the Clamshell Terminal Block to the Pedestrian Terminal Block**





EAGLE[®]

Traffic Control Systems

mobotrex[®]

SIGNAL CATALOG

109 W 55TH STREET | DAVENPORT, IA 52806 | 563-323-0009

