

TF4200 Series Load Bay

NEMA TS-2, Type 2



Description

Eagle load bays are available in dedicated eight, twelve, and sixteen load switch configurations.

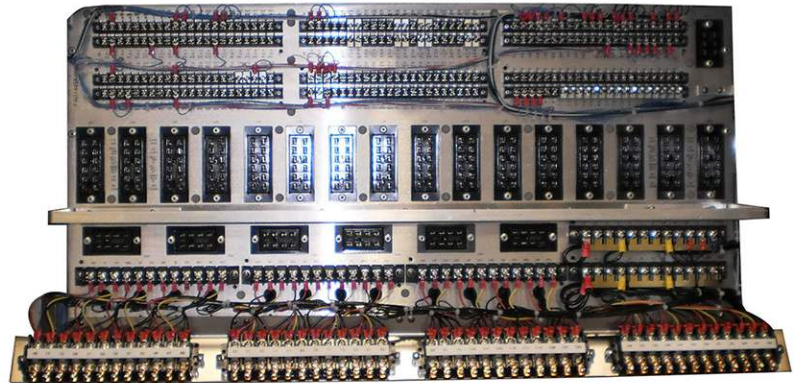
The TF4200 series load bays are hardwired for ease of maintenance and economical modification.

The flash indication colors can be programmed from the front panel, using only a screwdriver.

The load bays will fit into most existing Eagle cabinets and can be installed in less than four (4) hours.

Multiple options are available for customizing the load bay. Contact MoboTrex for available options.

Note: The TF4212 and TF4216 load bays will only fit in size M36 or larger cabinets.



Eagle TF4216 Load Bay

Part Number	TF4208	TF4212	TF4216
Controller	NEMA TS2, Type 2	NEMA TS2, Type 2	NEMA TS2, Type 2
Monitor	MMU	MMU	MMU
Load Switch Positions	8	12	16
Flash Relay Positions	4	6	6 or 8
NEMA-2 Circuit Flasher	1	1	1
Dimensions	18.5" H x 19.25" W	18.5" H x 28.25" W	16" H x 32.5" W

Eagle Traffic Control Systems continues our 80+ year history of providing excellence in the ever evolving traffic industry. All of Eagle's products are developed with the highest standards of engineering and manufacturing. Eagle maintains a superior level of integrity in interactions with all of our business partners and customers. We also take tremendous pride in being model corporate citizens.

mobotrex[®]
— MOBILITY & TRAFFIC EXPERTS