

# Span Wire Hardware



**EAGLE**<sup>®</sup>  
Traffic Control Systems

## Features

- Heavy Duty Cast Iron construction
- Stainless Steel hardware
- Adjustable U-bolts for securing wire clamp to span wire
- Balance adjuster for additional adjustment features  
1-1/2" thread size

## Options

- Wire Entrance available with male or female fitting for connection to signal head
- Powdercoating – gloss or flat black, yellow, green, or custom colors – contact us for options
- Multiple options available for 1, 2, 3, or 4-way signal mounting

## Ordering Information

- A32132-XX – Wire Entrance Assembly
- A32000-XX – Balance Adjuster
- A31926-XX – Cable Clamp Assembly
- Kits available to combine these assemblies



**A31926  
Cable Clamp**

**A32000  
Balance Adjuster**

**A32123  
Wire Entrance**

**Span Wire Hardware**

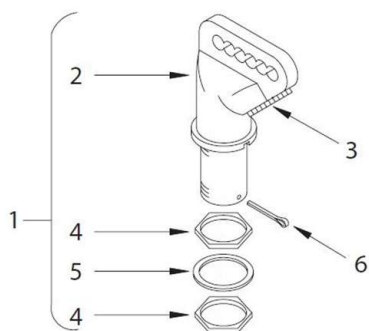
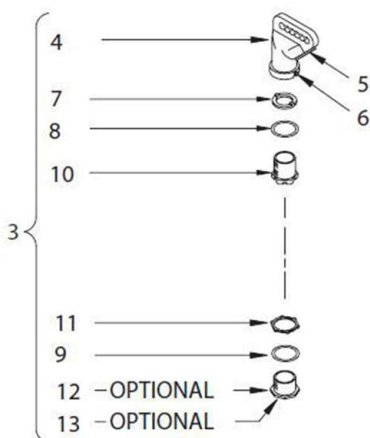
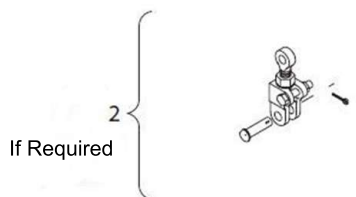
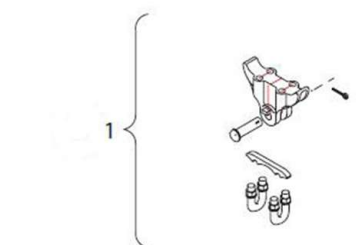


*Eagle Traffic Control Systems continues our 80+ year history of providing excellence in the ever evolving traffic industry. All of Eagle's products are developed with the highest standards of engineering and manufacturing. Eagle maintains a superior level of integrity in interactions with all of our business partners and customers. We also take tremendous pride in being model corporate citizens.*

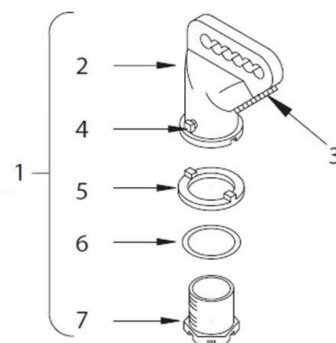
# Span Wire Hardware



**EAGLE**  
Traffic Control Systems



Item	Description	Part Number
1	Cable Suspension Clamp	A31926
2	Balance Adjuster	A32000
3	1-Way with Bottom Closure	A32132
4	Wire Entrance	M32162
5	Insulator Bushing	M10732
6	Set Screw (1/4-20)	M50360
7	Serrated Ring	M10466
8	Neoprene Washer	M60615
9	Flat Washer	M30473
10	Lock Nipple	M32272
11	Conduit Nut	M31040
12	Long Ornament Cap	M20872
13	Short Ornament Cap	M20816



Item	Description	Part Number
1	Wire Entrance	A32132
2	Entrance Hanger	M32162
3	Insulator Bushing	M10738
4	Set Screw (3/8-16)	M50120
5	Serrated Ring	M20466
6	Neoprene Washer	M60615
7	Lock Nipple	M32272

Item	Description	Part Number
1	Wire Entrance	A32125
2	Entrance Hanger	M32142
3	Insulator Bushing	M10738
4	Locknut	M30244
5	Lead Washer	M81743
6	Cotter Pin (5/32)	M50553

**mobotrex**  
MOBILITY & TRAFFIC EXPERTS