



Street Brite

Product Description

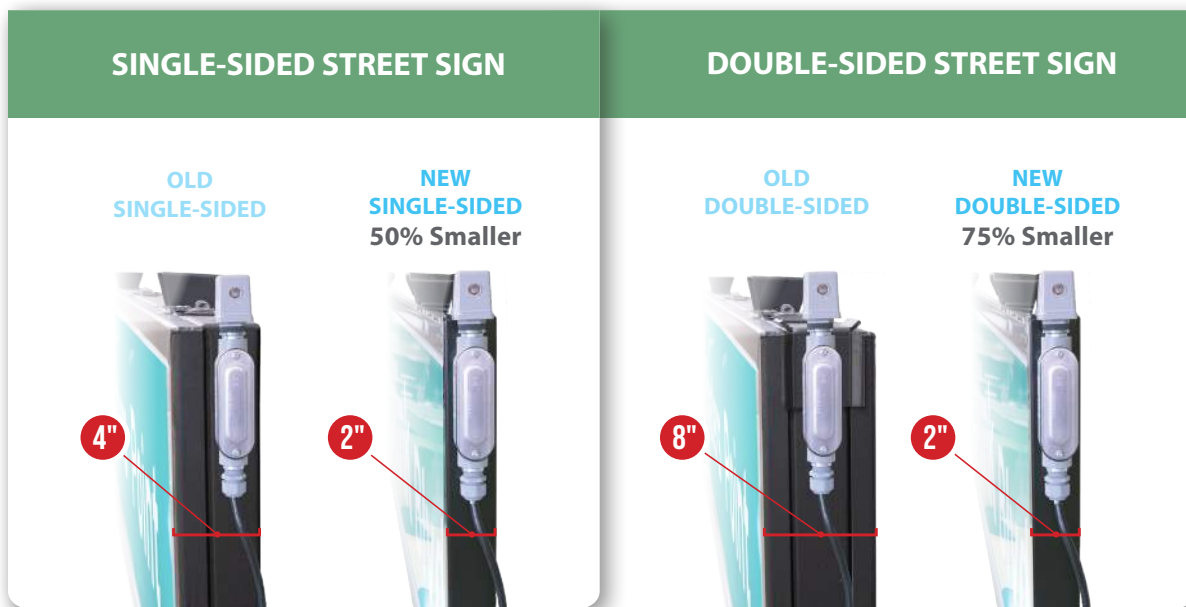
The Multilink Street Brite Sign has been designed and engineered to address the needs of the traffic industry; improving reliability, accessibility, and visibility. Unmatched in the industry, the Street Brite Sign's heavy-duty frame is constructed with aircraft-grade, 8-gauge aluminum, can withstand wind speeds up to 150 miles per hour and is 2/3 the weight of other signage. Set in the sealed junction box, the innovative Photo Eye provides automatic powering on and off, allowing the LED strips to boast a long-life with a minimum of 10 years. With easy, tool-free accessibility, the interior components are replaceable in the field and the reenterable side panel locks into place with a weather-tight seal. The sign's 3M translucent material illuminates as well as reflects to maintain zero shadow stabilization in all lighting conditions.

Features & Benefits

- Excellent day and night visibility
- Available in single and double sided illumination
- Tool-free entry allows for fast and simple maintenance.
- Can be field installed without the need to open the sign
- 20% more energy efficiency in power usage and capable of solar assistance
- Withstands a wind load force of over 150mph wind speed
- Slim design provides weight reduction and less stress and load on the physical mounting hardware
- LED bulb technology lasts up to 500% longer

Specifications

General			
Parameter	Specification		
Dimensions:	Width: 48", 72", 96" Height: 18", 24" Depth: 2"		
Weight:	Max. 7lbs. per sq. ft.		
Sides:	Single Double		
Mounting:	Under-hang Mount -Pelco SE-5015 -Pelco SE-5146	Span Wire Mount Pelco SE-5214	Side Mount Pelco AS-0661 Sky Bracket Sign Mount
LED's:	Single Row Custom PCB 5000K White		
Power Supplies:	LPC-60 Series		
Font:	Highway Gothic Clearview		
Safety Standard:	UL 48 Edition 15 CSA C22.2 No 207-15 Edition 2		



Ordering Information

Street Brite Signs (Ordering Information)

STOCK ID	DESCRIPTION	DIMENSIONS	STOCK ID	DESCRIPTION	DIMENSIONS
050-425-10	Double Sided	24"H x 48"W x 2"D	050-430-10	Single Sided	24"H x 48"W x 2"D
050-422-10	Double Sided	24"H x 72"W x 2"D	050-431-10	Single Sided	24"H x 72"W x 2"D
050-424-10	Double Sided	24"H x 96"W x 2"D	050-432-10	Single Sided	24"H x 96"W x 2"D
050-427-10	Double Sided	18"H x 48"W x 2"D	050-433-10	Single Sided	18"H x 48"W x 2"D
050-428-10	Double Sided	18"H x 72"W x 2"D	050-434-10	Single Sided	18"H x 72"W x 2"D
050-429-10	Double Sided	18"H x 96"W x 2"D	050-435-10	Single Sided	18"H x 96"W x 2"D



Multilink Inc.
580 Ternes Ln
Elyria, OH 44035
Tel: (440) 366-6966
Fax: (440) 366-6802



facebook.com/GoMultilink1



twitter.com/GoMultilink



youtube.com/GoMultilink

© Multilink Inc. 2020 • All Rights Reserved