



VantagePegasus®

Wireless broadband communications for transportation system needs

Benefits of the Vantage Pegasus



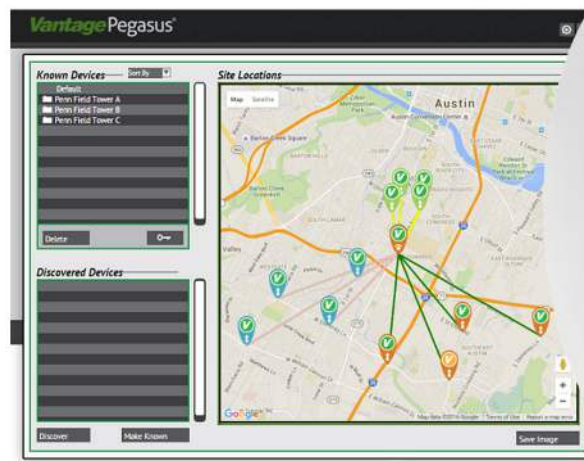
Built with carrier grade radio components that deliver unmatched wireless connectivity



Interoperable with existing wireless solutions from other vendors



Laptop or server-based, web-browser compatible



Failure to communicate is not an option

Trustworthy wireless service is demanded for transportation systems and its users. VantagePegasus wireless networks are built with carrier grade radio components that deliver unmatched wireless connectivity and the bandwidth for communications from remote sites to a centralized center.

VantagePegasus radios are certified to FCC, CE and NEMA standards and are designed and tested to withstand year-round weather conditions while delivering uninterrupted connectivity.

Radios support 2.4GHz or 5.8GHz unlicensed frequency bands with a range of antenna solutions to achieve maximum distance, throughput, and reliability.

Radio Configurations

- Connectorized radios with various antenna options
- Twistport radio with symmetrical horn antenna options

VantagePegasus®

Wireless broadband communications
for transportation system needs

Dependable, robust wireless systems for:

- Roadway video detection
- Live streaming video to TMC
- Wireless controller interconnect
- City broadband wireless networks

SPECIFICATIONS

	2.4 GHz	5.8GHz
WLAN Standard	802.11b/g	802.11a (54 Mbps) 802.11n (150 Mbps) 802.11ac (300 Mbps)
Radio Scheme	OFDM (64QAM, 16QAM, QPSK, BPSK)	802.11a: OFDM (64QAM, 16QAM, QPSK, BPSK) 802.11n: OFDM (64QAM, 16QAM, QPSK, BPSK) 802.11ac: OFDM (MCS0-9) (Max 256QAM)
Frequency Range	2.400 – 2.500 GHz	U-NII-3 5.725 – 5.85 GHz (US and Canada)
Integrated Antenna Gain	19 dBi	Up to 23 dB
Integrated Antenna Pattern	18° (V) x 18° (H)	8° (V) x 8° (H)
Front-to-Back Ratio	>30 dBi	> 40 dBi
Cross Polarization	>30 dBi	> 30 dBi
RF Output Power	Up to 27 dBm	Up to 27 dBm adjustable
Receiver Sensitivity	-94 dBm (@ 6 Mbps) -83 dBm (@ 36 Mbps) -77 dBm (@ 48 Mbps) -74 dBm (@ 54 Mbps)	802.11a: -94 +/- 1.5db @ 6 Mbps, -74 +/- 1.5db @ 54 Mbps 802.11n: -94 +/- 1db @ 6 Mbps, -74 +/- 1db @ 150 Mbps 802.11ac: -96 +/- 1db @ 30 Mbps, -72 +/- 1db @ 300 Mbps
Data Rate	1 Mbps, 6 Mbps, 36 Mbps, 48 Mbps, 54 Mbps	802.11a: 54 / 48 / 36 / 24 / 12 / 9 / 6 Mbps 802.11n: 54 / 48 / 36 / 24 / 12 / 9 / 6 Mbps 802.11ac: 300 / 270 / 240 / 180 / 120 / 90 / 60 / 30 Mbps
Power Supply	18 VDC Passive POE	18 VDC Passive POE
Surge Protection	ESD: > 6kV Surge Handling: 8/20 uS (1kA)	ESD: > 6kV Surge Handling: 8/20 uS (1kA)
Operating Environment	-35° F to +165° F (-37° C TO +74° C)	-35° F to +165° F (-37° C TO +74° C)
Kits Include	Radio unit, pole mounting bracket, POE power supply, 150 ft. (45 m) outdoor Ethernet cable	Radio unit, pole mounting bracket, POE power supply, 150 ft. (45 m) outdoor Ethernet cable
Non-Kits Include	Radio unit, pole mounting bracket, POE power supply	Radio unit, pole mounting bracket, POE power supply
Non-Integrated Enclosure	15.4 x 15.4 x 3.2 inches (39.1 x 39.1 x 8.1 cm) 2.7 lbs (1.2 kg) 1.65 ft² (0.15m²) EPA	13.3 x 13.3 x 3.2 inches (33.8 x 33.8 x 8.1 cm) 2.0 lbs (0.91 kg) 1.23 ft² (0.12m²) EPA
Wind Survivability	125 mph (200 kph)	125 mph (200 kph)
Certification	FCC / IC	FCC / IC
Warranty	5 Years limited warranty	5 Years limited warranty



Copyright © 2018 Iteris, Inc. All rights reserved.

NOTICE: Iteris, Inc. reserves the right to change product specifications without notice. Information furnished is for informational purposes only. This information may not be complete or the latest revision. For the most up-to-date information, please contact Iteris, Inc.

iteris®