

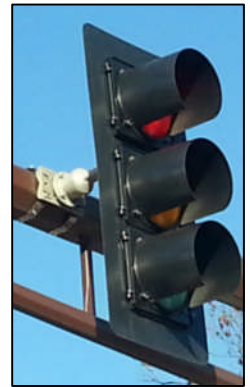
32D STRAP ADAPTER SUPPLIED HARDWARE

HARDWARE MEETS OR EXCEEDS STATE SPECIFICATIONS

- (1) 11D UNIVERSAL HUB ALUMINUM CASTING
- (4) 11RW ROCKING WASHER
- (2) 25G STRAP (UP TO 44" Ø, OR 14" O.D.*)
- (1) 1" X 3/4" BUSHING
- (1) 1 1/4" X 3" SCH. 40 PVC WIREWAY
- (1) 1 1/4" O RING SEAL
- (4) 1/4" X 3/4" TRUSS HEAD BOLT
- (4) 1/4" SPRING LOCK WASHER
- (4) 1/4" FLAT WASHER

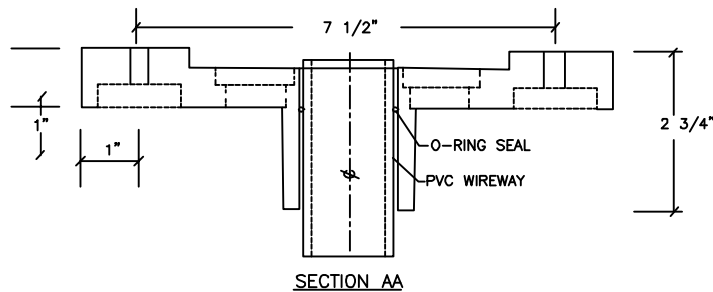
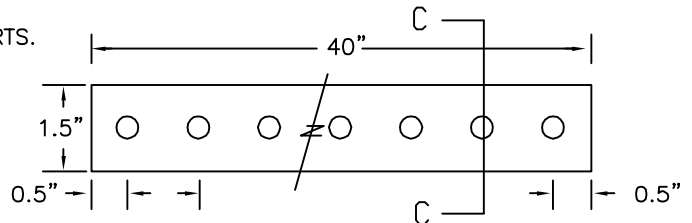
- (4) 1/4" NUT
- (4) 25TB "T" BOLT
- (2) 5/16" X 3/4" BOLT (STRAP LOCK BOLT)
- (6) 5/16" SPRING LOCK WASHER
- (4) 5/16" FLAT WASHER
- (4) 5/16" NUT

APPLY ANTI-SEIZE LUBRICANT TO ALL
THREADED SURFACES.

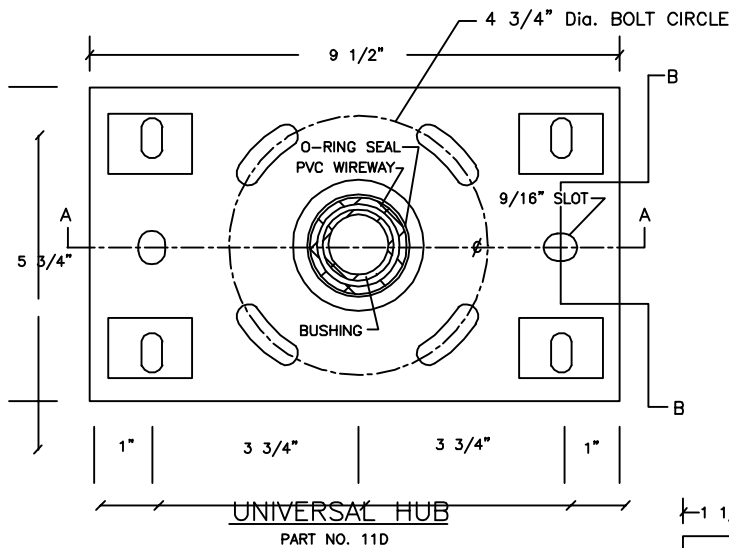


* NOTE:

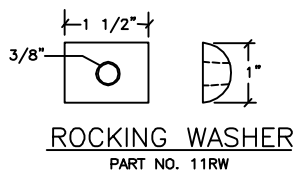
STRAPPING NOT RECOMMENDED FOR LARGER DIAMETER SUPPORTS.
FOR LARGER DIAMETER SUPPORTS, USE THRU-BOLT ROD.
FOR FLAT SURFACES, BOLT DIRECTLY TO SURFACE.
ALSO SEE 32UB UNIVERSAL HUB-BOLTED, OR
32DR THRU-BOLT ADAPTER.



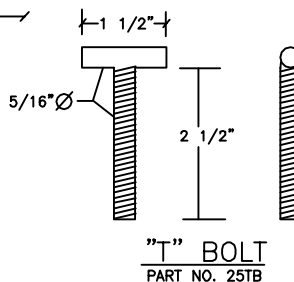
SECTION AA



UNIVERSAL HUB
PART NO. 11D



ROCKING WASHER
PART NO. 11RW

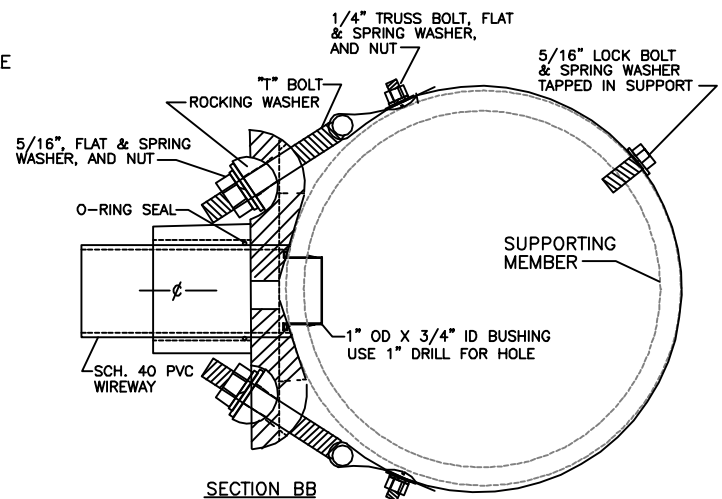


"T" BOLT
PART NO. 25TB

PUNCHED HOLE RIM EXTENSION
.345" HOLE .062" INCLUDING HOLE RIM
22 Ga. 304-2B STAINLESS STRAP

SECTION CC

PART NO. 25G, 40" STRAP
(TWO REQUIRED FOR ASSEMBLY)



SECTION BB



NOT TO SCALE