



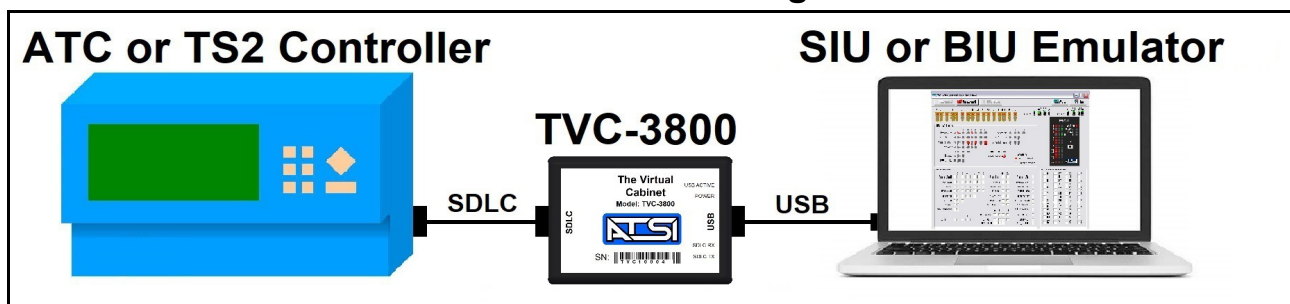
The Virtual Cabinet TVC-3800

Overview

The *Virtual Cabinet* Model TVC-3800 is a complete diagnostic and testing toolkit for all devices that communicate on the SDLC bus in the ATC or TS2 Cabinets. *The Virtual Cabinet* connects to a Windows based computer with a USB connection¹. By using an intuitive graphical software interface, *The Virtual Cabinet* can be configured to emulate a cabinet controller or the cabinet SIU/BIU devices.

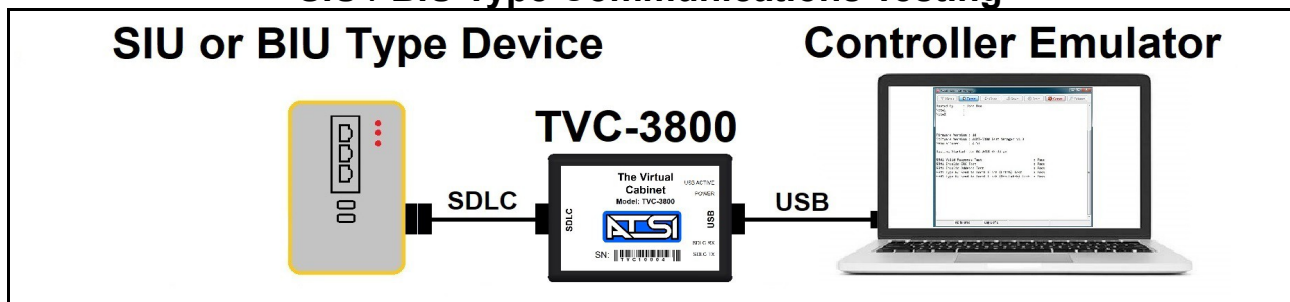


Controller Testing



- Connects to SB#1 on ATC or PORT 1 on TS2 Controllers
- Verify controller programming by emulating cabinet SIUs or BIUs
- Graphical software for activating SIU/BIU inputs and viewing controller responses
- Supports all NEMA TS2 Flashing Yellow Arrow modes

SIU / BIU Type Communications Testing

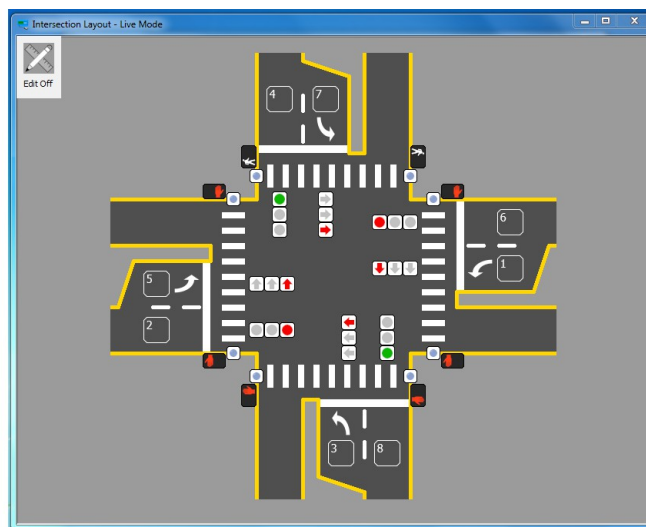
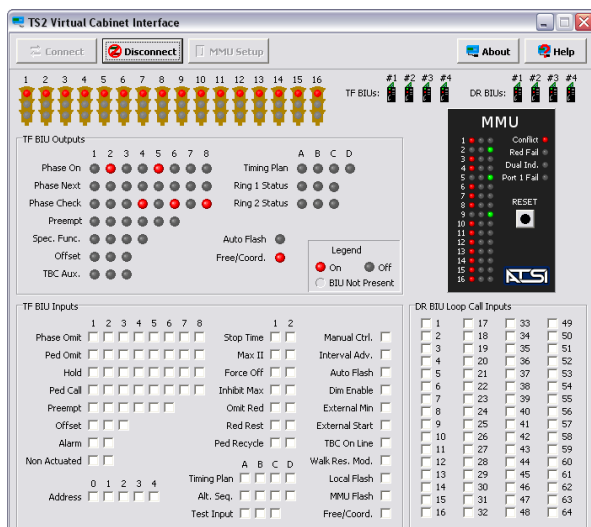


- Emulates ATC SB#1 for SIU type testing or TS2 Port 1 for BIU type testing²
- User selectable tests allow for verifying proper response to all frame types
- Useful for product development, final production testing or in the field testing

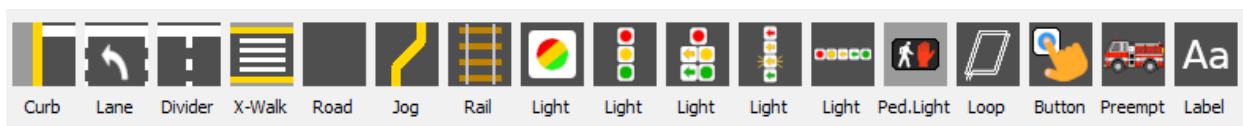


The Virtual Cabinet TVC-3800

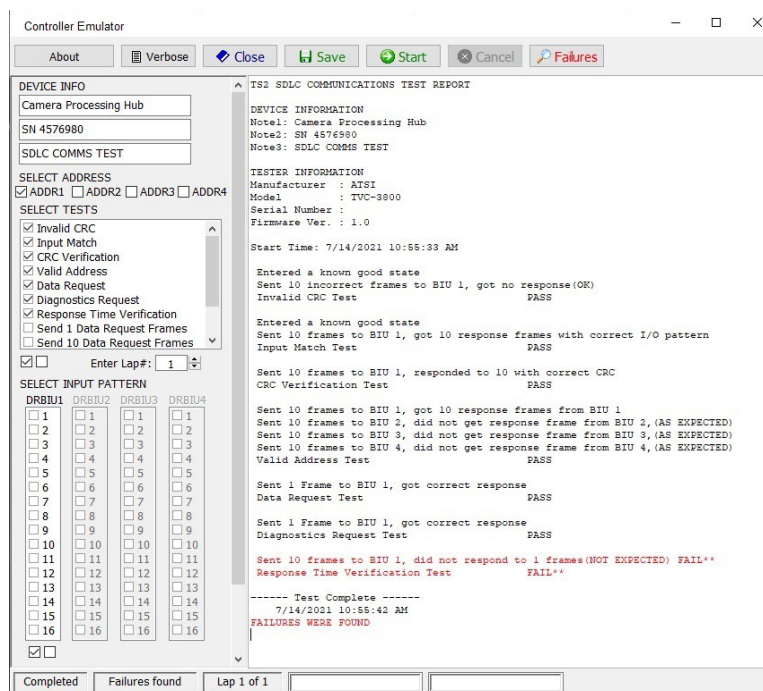
Software



View simulated intersection status in tabular or graphical format.



Use standard templates or create your own using drag and drop symbols .



Customize tests for hybrid SIU/BIU devices such as radar or video detection processors².

1. Computer running Windows 10 or later required.
2. For certification testing of standard SIU or BIU devices use ASIT-5500 or BIUT-820 Testers.

For more information contact sales@atsi-tester.com or 740-592-2874 ext 1210.
Athens Technical Specialists, Inc., www.atsi-tester.com