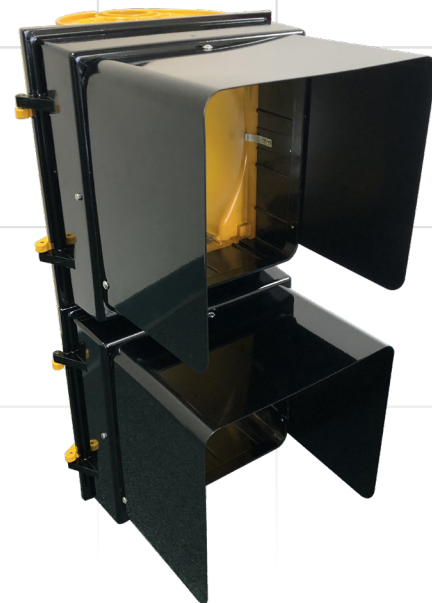


12-inch Aluminum Pedestrian Signals

DATA SHEET



DESCRIPTION

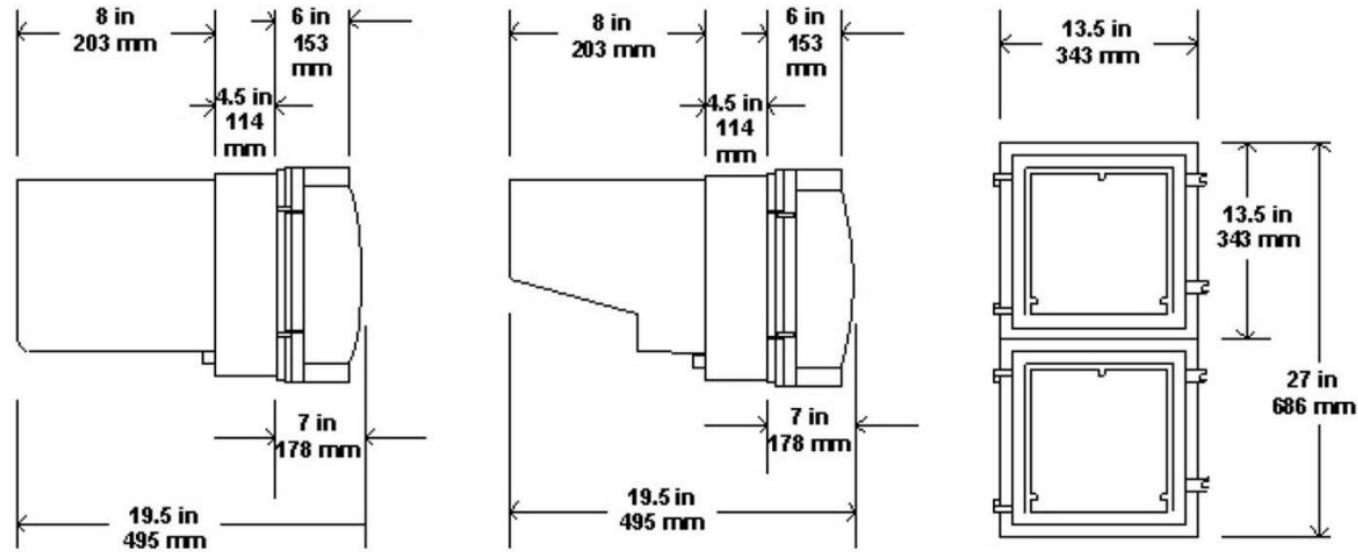
The 12-Inch Aluminum Pedestrian Signals from MoboTrex are engineered to provide optimal visibility and durability for urban and highway crosswalks. Crafted from high-strength die-cast aluminum, these signals are designed to meet or exceed the Institute of Transportation Engineers (ITE) specifications, ensuring reliable performance in various traffic environments.

FEATURES

- Meets or exceeds ITE specifications.
- Design provides minimum weight but maximum rigidity and strength.
- Housing – One piece die-cast unit with serrations in 5° increments at each end. Each housing has provisions for mounting two terminal blocks. Housings may be fastened together to make multi-section signals.
- Door – One piece die-cast aluminum unit equipped with stainless steel hinge pins. Two stainless steel captive eye bolts and wing nuts permit easy access to the inside of the housing.
- Visor – One piece formed aluminum visor is secured with stainless steel hardware. Cutaway and tunnel visors are available.
- Gaskets – Weather-tight quality of the unit is assured by separate lens and door gaskets.
- Positive Positioning – Positive positioning and locking is achieved through the use of serrated brackets.
- Mounting – Completely compatible with all standard signal hardware.

TUNNEL VISOR

CUT AWAY VISOR



Weights	12" (300mm)
Single section with visor (approx.)	14 lbs. (6.35 kg)
Housing	5 lbs. 6.3 oz. (2.45 kg)
Door	4 lbs. 0.4 oz. (1.83 kg)