

# Span Wire Hardware

## DATA SHEET



### DESCRIPTION

Span wire hardware consists of components such as clamps, brackets, and fittings used to suspend and secure traffic signals, signs, and other equipment between poles. Designed for durability and stability, this hardware ensures reliable support in various weather and traffic conditions.

### OPTIONS

Wire Entrance available with male or female fitting for connection to signal head

Powdercoating – gloss or flat black, yellow, green, or custom colors

Multiple options available for 1, 2, 3, or 4-way signal mounting

### ORDERING INFORMATION

A32132-XX – Wire Entrance Assembly

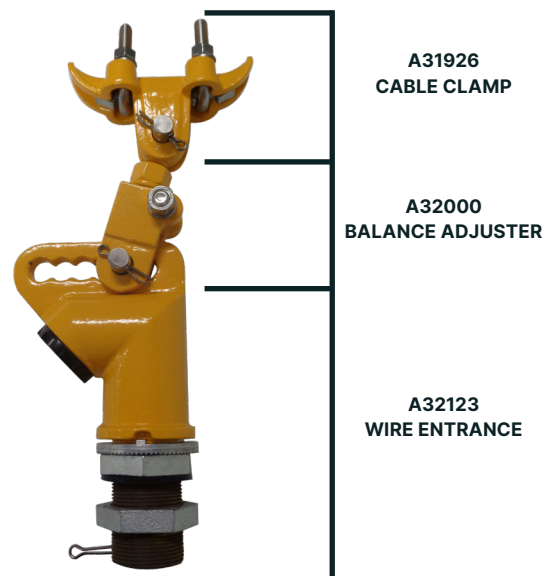
A32000-XX – Balance Adjuster

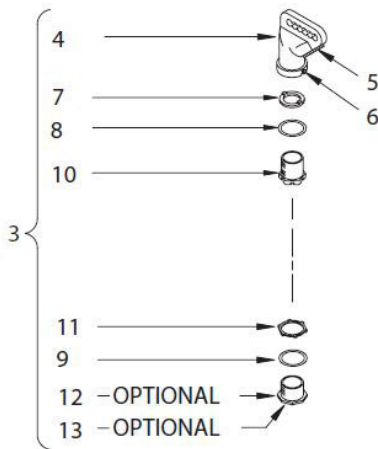
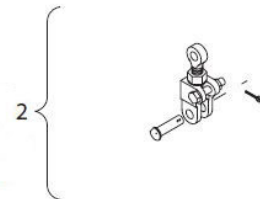
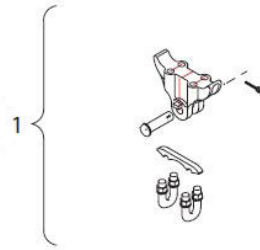
A31926-XX – Cable Clamp Assembly

Kits available to combine these assemblies

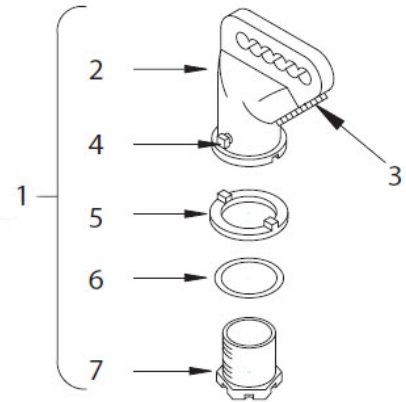
### FEATURES

- ▶ Heavy Duty Cast Iron construction
- ▶ Stainless Steel hardware
- ▶ Adjustable U-bolts for securing wire clamp to span wire
- ▶ Balance adjuster for additional adjustment features 1- 1/2" thread size

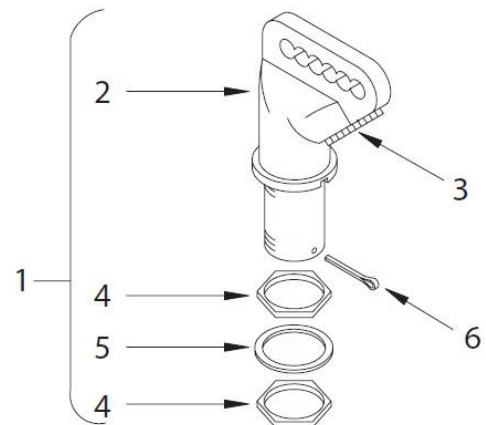




Item	Description	Part Number
1	Cable Suspension Clamp	A31926
2	Balance Adjuster	A32000
3	1-Way with Bottom Closure	A32132
4	Wire Entrance	M32162
5	Insulator Bushing	M10732
6	Set Screw (1/4-20)	M50360
7	Serrated Ring	M10466
8	Neoprene Washer	M60615
9	Flat Washer	M30473
10	Lock Nipple	M32272
11	Conduit Nut	M31040
12	Long Ornament Cap	M20872
13	Short Ornament Cap	M20816



Item	Description	Part Number
1	Wire Entrance	A32132
2	Entrance Hanger	M32162
3	Insulator Bushing	M10738
4	Set Screw (3/8-16)	M50120
5	Serrated Ring	M20466
6	Neoprene Washer	M60615
7	Lock Nipple	M32272



Item	Description	Part Number
1	Wire Entrance	A32125
2	Entrance Hanger	M32142
3	Insulator Bushing	M10738
4	Locknut	M30244
5	Lead Washer	M81743
6	Cotter Pin (5/32)	M50553